

Fire Alarm Equipment Labeling

UL investigates and Lists a wide range of fire alarm system control units and equipment. This includes two basic types of configurations: products that arrive from the factory as completely assembled units and products that are assembled in the field from various subassemblies.

To properly inspect and approve installations of the fire alarm system equipment, it is important to understand the UL Listing Marks that each type of unit should bear as well as related installation considerations.

Certification markings

All UL Listed fire alarm control units, equipment and accessories include the UL Signaling Listing Mark on the product or on the smallest unit container in which the product is packaged. This Mark includes the UL symbol with the word SIGNALING above the UL symbol and the word LISTED below the UL symbol, a control number, and the product name, e.g., Fire Alarm Equipment or Fire Alarm Subassembly.

A single fire alarm equipment label is applied to control units and control unit accessories that represent complete products. For example, a control unit with an enclosure, power supply, and all of the applicable circuit boards that form a minimum configuration system typically would bear a single Fire Alarm Equipment Listing Mark. This Listing covers the complete unit, including the circuit boards, power supply and equipment enclosure and does not require additional components or subassemblies to be provided to form a minimum system.



A Fire Alarm Subassembly Listing Mark is applied to each component of a control unit or accessory that do not represent a complete product. Typical subassemblies include a control unit or accessory enclosure, separate circuit boards, power supplies, assemblies without enclosures, and similar components. Often, fire alarm control units are modular and assembled in the field. In this case, there may be several fire alarm subassemblies that make up a fire alarm control unit. The manufacturer's installation

instructions detail the arrangement of subassemblies required to create a fire alarm control unit and/or system.

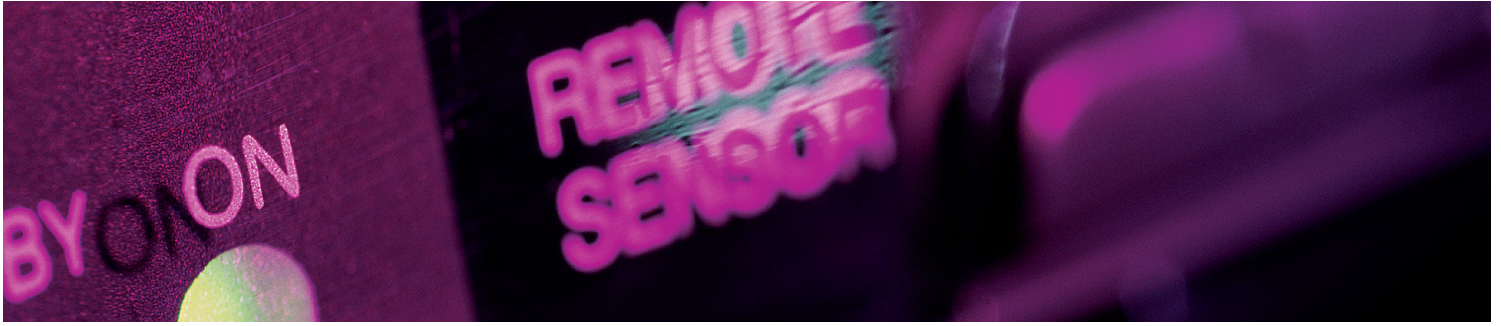
Installation instructions

The manufacturer's installation instructions referenced on a product marking by drawing number and revision level/date should be consulted for details regarding minimum system configuration and other specifics concerning the arrangement of fire alarm subassemblies required to make up a complete fire alarm control unit and/or

continued »



Fire Alarm Equipment Labeling (continued)



system. These instructions are reviewed by UL during the certification process, and during Follow-Up inspections at the manufacturer's assembly plant to verify that they comply with UL requirements.

Additional markings

Equipment that is Listed for use in applications in addition to fire alarm systems will include information about the additional application as part of the UL Listing Mark. These include applications such as security, energy management, hospital signaling and nurse call, etc. Consult the individual Listings for the application coverage(s) for a particular system.

The product name on the UL Listing Mark may be abbreviated using type codes as follows. "Type F" represents fire alarm equipment", and "Type F: Subassembly" represents fire alarm equipment subassembly.

Other type codes, may be used to represent other applications for which the equipment is Listed. These include, among others:

- Type S — Security Equipment
- Type HN — Hospital Signaling and Nurse Call Equipment
- Type G — General Signaling Equipment
- Type E — Emergency Signaling Equipment

Refer to the product category guide information for specific details on type codes.

Inspection considerations

Code authorities inspecting fire alarm system installations should consider the following:

- Make sure all system components include the word "SIGNALING" as part of the UL Listing Mark
- Verify that the equipment includes a Fire Alarm Equipment Listing Mark, and/or that field installed or assembled components such as enclosures, circuit boards, internal power supplies and modules and similar components include a Fire Alarm Subassembly Listing Mark. Products and components that do not bear one of these markings are not considered to be UL Listed.
- Confirm that the system is configured and installed as described in the installation instructions referenced on the product markings
- Install the equipment in accordance with all applicable code requirements, including those found in NFPA 72